

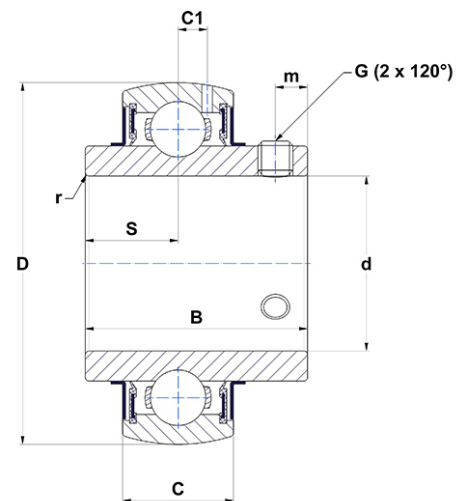
PDF technical sheet UC31752G2



Insert bearings

zinc-coated insert, spherical outer diameter with locking pin, fixing by socket set screw, seal with slinger, food grease

Product definition	
B	3.7795 "
C	1.8110 "
C1	0.6102 "
d	3.2500 "
D	7.0866 "
G	5/818UNF
m	0.6299 "
r	3
S	1.5748 "
SW	0.3125 "



m.ncatalog.fo.featuresotherperformance	
C	132.60 kN
C0	96.50 kN
T min.	-4 °C
T max.	212 °C

Other features	
Weight	23.85 oz
Recommended tightening torque for set screw	54.50 Nm