

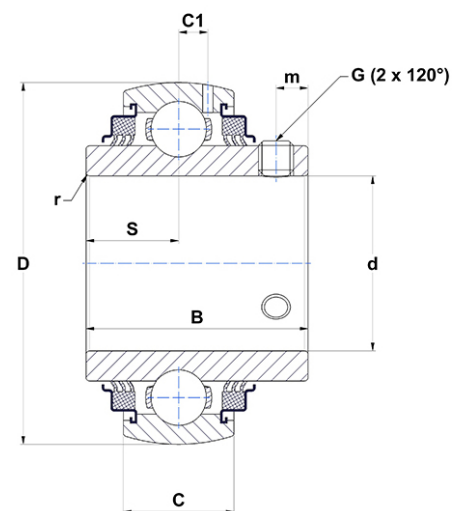
PDF technical sheet UC309G2L3



Insert bearings

spherical outer diameter, fixing by socket set screw, triple lip seal

Product definition	
B	2.2441 "
C	1.1811 "
C1	0.3543 "
d	1.7717 "
D	3.9370 "
G	M10x1,25
m	0.3937 "
r	2
S	0.8661 "
SW	0.1969 "



m.ncatalog.fo.featuresotherperformance	
C	53 kN
C0	31.80 kN
T min.	-4 °C
T max.	212 °C

Other features	
Weight	4.52 oz
Recommended tightening torque for set screw	22 Nm