

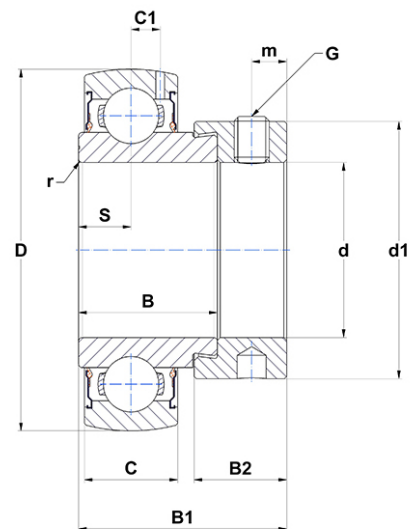
PDF technical sheet SES21132



Insert bearings

stainless steel insert, spherical outer diameter, fixing by eccentric locking collar, single lip seal, food grease

Product definition	
B	1.2795 "
B1	1.9055 "
C	0.8268 "
C1	0.2756 "
d	2.0000 "
d1	3.0000 "
D	3.9370 "
G	3/824UNF
m	0.3150 "
r	1
S	0.4134 "
SW	0.1875 "



m.ncatalog.fo.featuresotherperformance	
C	34 kN
C0	25.50 kN
T min.	-4 °C
T max.	212 °C

Other features	
Weight	3.63 oz
Recommended tightening torque for set screw	18.70 Nm