

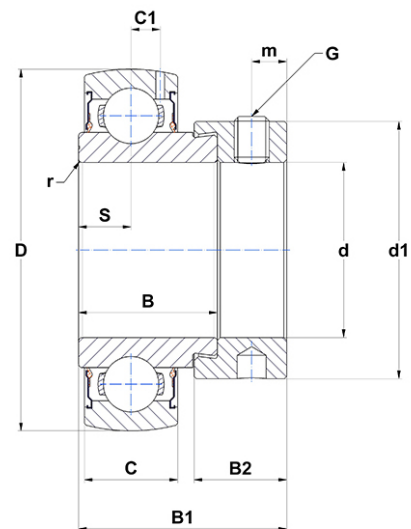
## PDF technical sheet SES21031



### Insert bearings

stainless steel insert, spherical outer diameter, fixing by eccentric locking collar, single lip seal, food grease

Product definition	
B	1.1890 "
B1	1.7205 "
C	0.7874 "
C1	0.2559 "
d	1.9375 "
d1	2.7520 "
D	3.5433 "
G	5/1624UNF
m	0.2559 "
r	1
S	0.3937 "
SW	0.1563 "



m.ncatalog.fo.featuresotherperformance	
C	27.50 kN
C0	23.70 kN
T min.	-4 °C
T max.	212 °C

Other features	
Weight	2.65 oz
Recommended tightening torque for set screw	8.30 Nm