

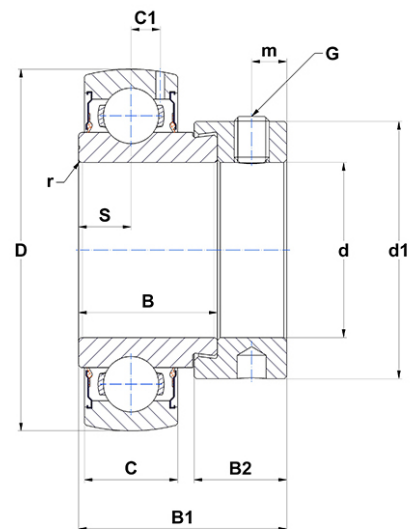
PDF technical sheet SES20928



Insert bearings

stainless steel insert, spherical outer diameter, fixing by eccentric locking collar, single lip seal, food grease

Product definition	
B	1.1890 "
B1	1.7205 "
C	0.7480 "
C1	0.2520 "
d	1.7500 "
d1	2.5000 "
D	3.3465 "
G	5/1624UNF
m	0.2559 "
r	1
S	0.3740 "
SW	0.1563 "



m.ncatalog.fo.featuresotherperformance	
C	25.70 kN
C0	20.80 kN
T min.	-4 °C
T max.	212 °C

Other features	
Weight	2.36 oz
Recommended tightening torque for set screw	8.30 Nm