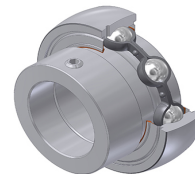


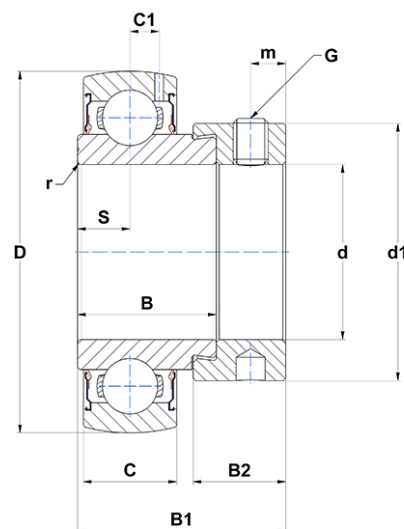
PDF technical sheet SES20723



Insert bearings

stainless steel insert, spherical outer diameter, fixing by eccentric locking collar, single lip seal, food grease

Product definition	
B	1.0000 "
B1	1.5315 "
C	0.6693 "
C1	0.2244 "
d	1.4375 "
d1	2.1890 "
D	2.8346 "
G	5/1624UNF
m	0.2559 "
r	1
S	0.3346 "
SW	0.1563 "



m.ncatalog.fo.featuresotherperformance	
C	20.10 kN
C0	15.60 kN
T min.	-4 °C
T max.	212 °C

Other features	
Weight	1.80 oz
Recommended tightening torque for set screw	8.30 Nm