

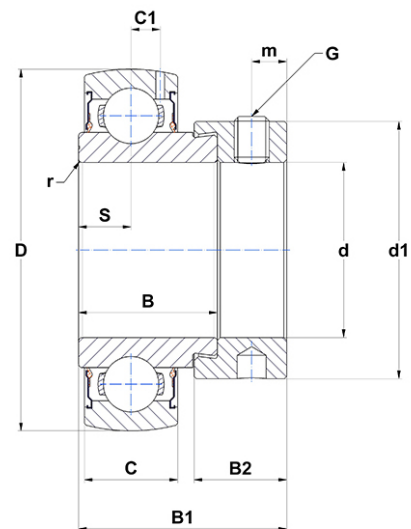
PDF technical sheet SES20619



Insert bearings

stainless steel insert, spherical outer diameter, fixing by eccentric locking collar, single lip seal, food grease

Product definition	
B	0.9370 "
B1	1.4055 "
C	0.6299 "
C1	0.1969 "
d	1.1875 "
d1	1.7520 "
D	2.4409 "
G	5/1624UNF
m	0.2362 "
r	0.5
S	0.3150 "
SW	0.1563 "



m.ncatalog.fo.featuresotherperformance	
C	15.30 kN
C0	11.50 kN
T min.	-4 °C
T max.	212 °C

Other features	
Weight	1.13 oz
Recommended tightening torque for set screw	8.30 Nm