

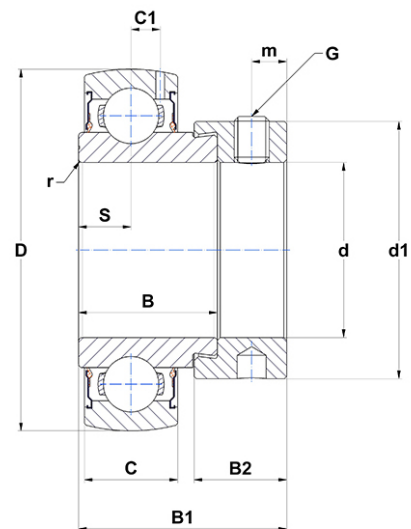
PDF technical sheet SES202



Insert bearings

stainless steel insert, spherical outer diameter, fixing by eccentric locking collar, single lip seal, food grease

Product definition	
B	0.7520 "
B1	1.1260 "
C	0.4724 "
C1	0.1339 "
d	0.5906 "
d1	1.1260 "
D	1.5748 "
G	M6x1
m	0.1969 "
r	0.5
S	0.2362 "
SW	0.1181 "



m.ncatalog.fo.featuresotherperformance	
C	7.80 kN
C0	4.50 kN
T min.	-4 °C
T max.	212 °C

Other features	
Weight	0.42 oz
Recommended tightening torque for set screw	3.90 Nm