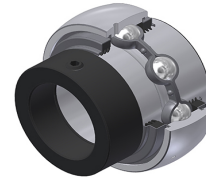


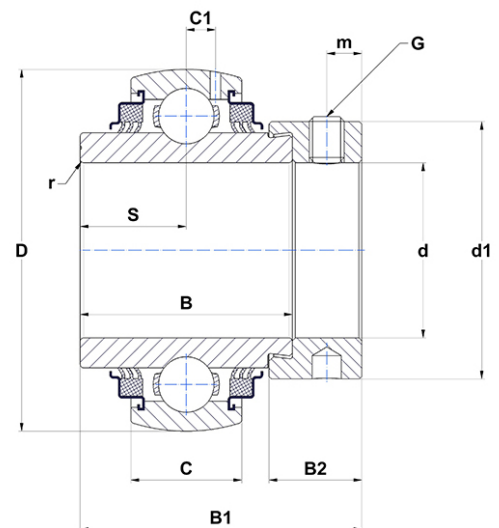
PDF technical sheet EX317G2L3



Insert bearings

spherical outer diameter, fixing by eccentric locking collar, triple lip seal

Product definition	
B	3.3110 "
B1	4.3110 "
B2	1.2520 "
C	1.8110 "
C1	0.6102 "
d	3.3465 "
d1	5.0000 "
D	7.0866 "
G	M16x1,5
m	0.5118 "
r	3
S	1.6535 "
SW	0.3150 "



m.ncatalog.fo.featuresotherperformance	
C	132.60 kN
C0	96.50 kN
T min.	-4 °C
T max.	212 °C

Other features	
Weight	28.08 oz
Recommended tightening torque for set screw	64 Nm