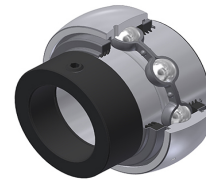


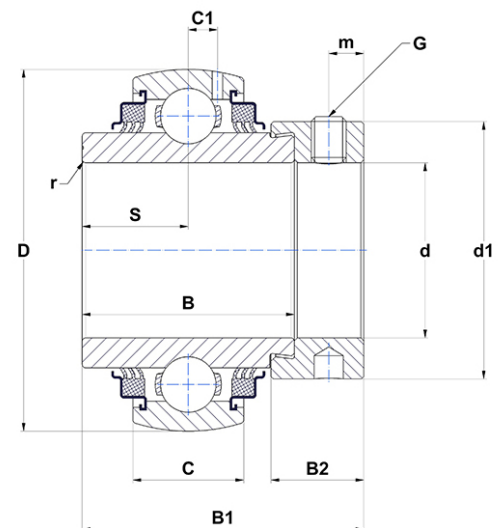
## PDF technical sheet EX31236G2L3



### Insert bearings

spherical outer diameter, fixing by eccentric locking collar, triple lip seal

Product definition	
B	2.4370 "
B1	3.1260 "
B2	0.9409 "
C	1.4173 "
C1	0.4449 "
d	2.2500 "
d1	3.5039 "
D	5.1181 "
G	3/824UNF
m	0.3543 "
r	2
S	1.2205 "
SW	0.1875 "



m.ncatalog.fo.featuresotherperformance	
C	81.60 kN
C0	51.80 kN
T min.	-4 °C
T max.	212 °C

Other features	
Weight	10.41 oz
Recommended tightening torque for set screw	16.80 Nm