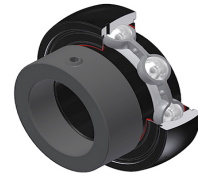


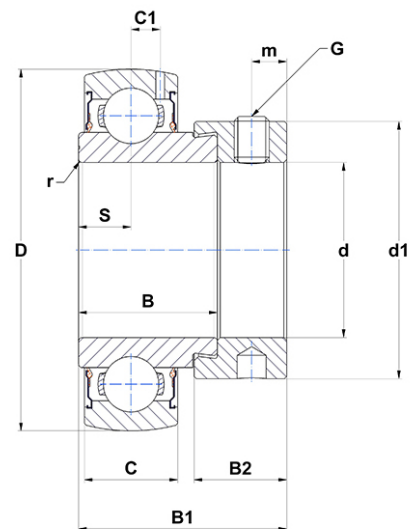
## PDF technical sheet ES21236G2T20



### Insert bearings

spherical outer diameter, fixing by eccentric locking collar, labyrinth seal, for high-temp. applications

Product definition	
B	1.3150 "
B1	1.9409 "
B2	0.8780 "
C	0.9449 "
C1	0.3150 "
d	2.2500 "
d1	3.2283 "
D	4.3307 "
G	3/824UNF
m	0.3150 "
r	1.1
S	0.4724 "
SW	0.1875 "



m.ncatalog.fo.featuresotherperformance	
C	52.50 kN
C0	32.80 kN
T min.	-4 °C
T max.	392 °C

Other features	
Weight	4.59 oz
Recommended tightening torque for set screw	16.80 Nm