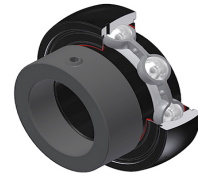


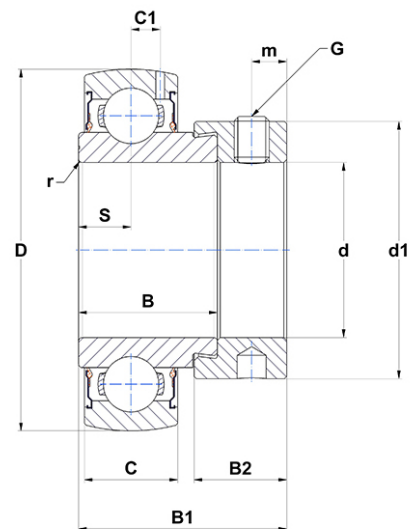
PDF technical sheet ES20824G2T20



Insert bearings

spherical outer diameter, fixing by eccentric locking collar, labyrinth seal, for high-temp. applications

Product definition	
B	1.1890 "
B1	1.7205 "
B2	0.7205 "
C	0.7087 "
C1	0.2441 "
d	1.5000 "
d1	2.2244 "
D	3.1496 "
G	5/1624UNF
m	0.2559 "
r	1.1
S	0.4331 "
SW	0.1563 "



m.ncatalog.fo.featuresotherperformance	
C	29.60 kN
C0	18.20 kN
T min.	-4 °C
T max.	392 °C

Other features	
Weight	2.40 oz
Recommended tightening torque for set screw	8 Nm