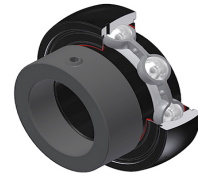


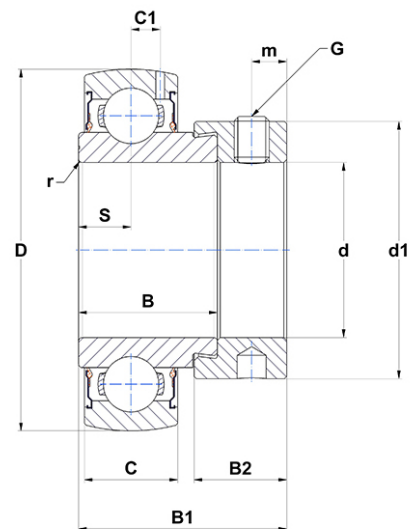
PDF technical sheet ES20412G2T20



Insert bearings

spherical outer diameter, fixing by eccentric locking collar, labyrinth seal, for high-temp. applications

Product definition	
B	0.8425 "
B1	1.2165 "
B2	0.5315 "
C	0.5512 "
C1	0.1575 "
d	0.7500 "
d1	1.2756 "
D	1.8504 "
G	1/428UNF
m	0.1969 "
r	0.6
S	0.2953 "
SW	0.1250 "



m.ncatalog.fo.featuresotherperformance	
C	12.80 kN
C0	6.65 kN
T min.	-4 °C
T max.	392 °C

Other features	
Weight	0.53 oz
Recommended tightening torque for set screw	3.70 Nm