

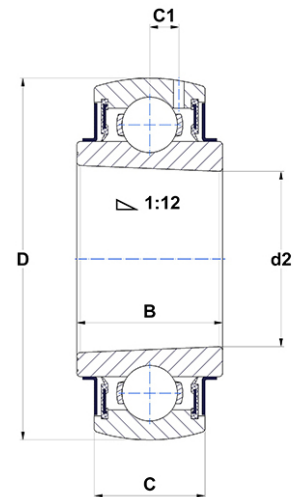
PDF technical sheet UK305G2



Insert bearings

spherical outer diameter, tapered bore, seal with slinger

Product definition	
B	1.0630 "
C	0.8268 "
C1	0.2441 "
d2	0.9843 "
D	2.4409 "



m.ncatalog.fo.featuresotherperformance	
C	22.36 kN
C0	11.50 kN
T min.	-4 °C
T max.	212 °C

Other features	
Weight	1.41 oz