

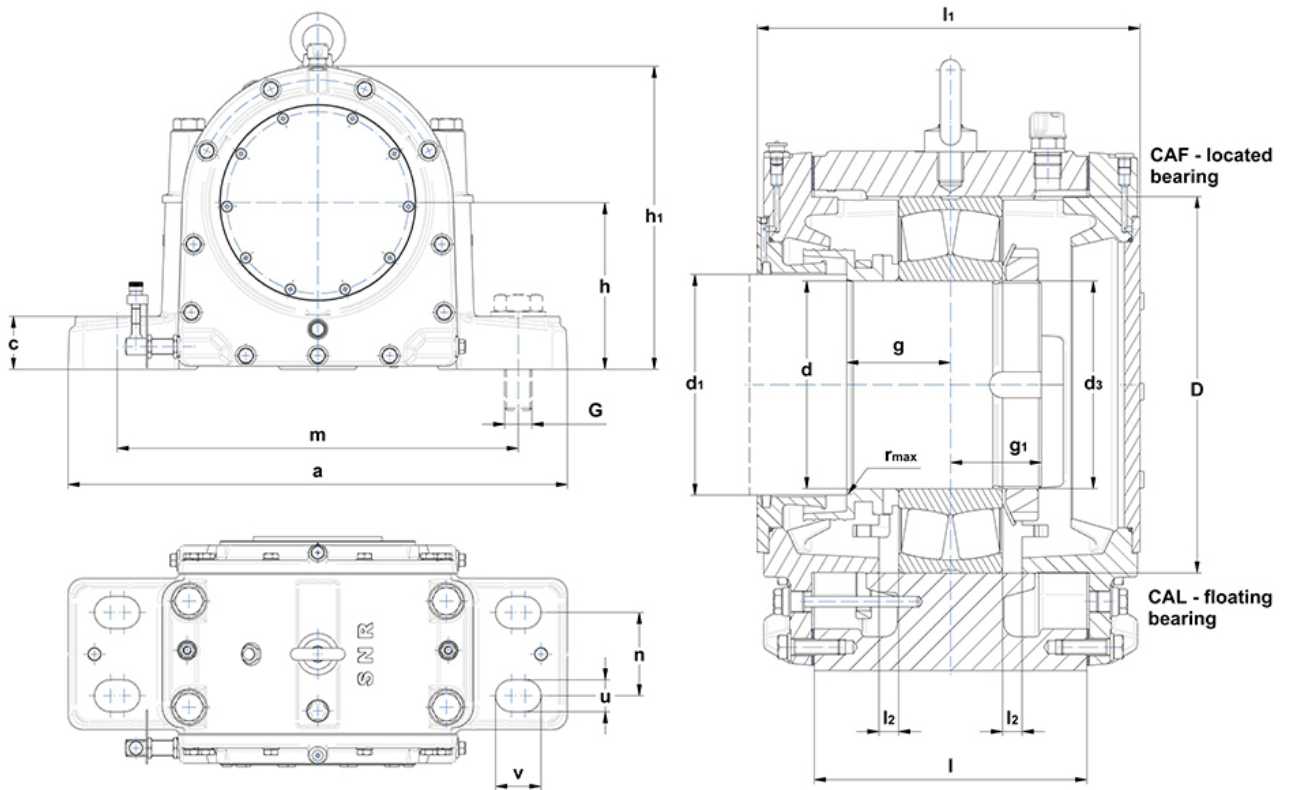
bearing 1	Nut	Lock washer	Feltstrips (optional)
22219	KM 19	MB 19	9x7,5x389

PDF technical sheet SNOE219CAL



Split plummer block housings SNOE

split plummer block housing for spherical roller bearings with cylindrical bore, made of grey cast, for oil lubrication



Product definition	
d	3.7402 "
d1	3.9370 "
d3	M95x2
a	19.2913 "
b	6.2992 "
c	1.9685 "
g	2.6378 "
g1	1.6535 "
h	5.9055 "
h1	10.6299 "
l	6.6929 "
l1	9.8425 "
l2	0.4724 "
m	15.7480 "
n	3.1496 "
u	1.1811 "
v	1.7717 "
r max	0.0394 "
D	6.6929 "
oil level	52.2441 "
oil quantity	26.22 in ³
housing weight	194.01 oz
Material of Housing	grey cast
Brand	SNR

Screws	
fixing bolts G	M24
recommended torque	440 Nm
Connection bolts	M16
recommended torque	130 Nm
Eye bolt(s)	M12